



BARTLEY SECONDARY SCHOOL

10 JALAN BUNGA RAMPAI SINGAPORE 538403

Tel: 62889013 Fax: 62805595

Email: bartley_ss@moe.edu.sg

04 Jan 2022

Dear Parents / Guardians

Greetings and best wishes for a good year ahead!

On behalf of the staff at Bartley Secondary School, I would like to extend a warm welcome to you and your child/ward. We are looking forward to forming a meaningful partnership with you in the coming years to enable our children to grow as learners and leaders and achieve their best.

Communication with Parents

2. It is our practice to write to parents/guardians at least once a term to update you on school events and developments. You will receive the letter through your child/ward. A copy of the letter will also be available through our school website and Parents Gateway (PG) mobile app.
3. The school uses the PG mobile app, an initiative by MOE, to communicate our latest announcements, activities and programmes to parents/guardians. Using this app, parents/guardians are able to give consent to school activities and receive updates on Administrative and Financial Matters.
4. Parents/Guardians who have not signed up for Parents Gateway are highly encouraged to do so by downloading the Parents Gateway mobile app on your mobile phone using the QR code provided below, or download it from the Google Play Store or Apple App Store. You can then perform a simple one-time onboarding process by accessing the system using your SingPass.



5. Besides the termly letters, parents/guardians are also able to stay informed of our school's major activities and events through our school website calendar at <https://bartleysec.moe.edu.sg/information/students/school-calendar>.
6. We observe a five-day work week. Our General Office is closed on Saturdays and activities on Saturdays are minimised. If there is a need for parents and students to contact teachers, please do so between 7.30am and 6.00pm on school days.

Staff Movement

7. We bade farewell to Principal, Mr Mohd Azhar Terimo, on 14 Dec 2021 and wish him the very best for his next posting. We would also like to welcome the following staff who have joined us this year:

- Mr Chew Hock Wu Roy
- Mdm Hamidah Salleh
- Mr Lew Kian Peng
- Mdm Lim See Chin
- Mr Low Swee Tat
- Mr Muhammad Bazlee Bakhtiar Afandi
- Ms Quek Shir Ryn
- Mrs Tan Ming Ngo
- Mr Tan Chee Keong
- Mdm Tay Ling Ling

Key Activities in Semester 1

8. The key Sec 4/5 school activities scheduled for Term 1 can be found in **Annex A**. The first key event is Welcome Back Orientation scheduled on 04 Jan 2022. Students will be dismissed at 2.35pm.

9. Chinese New Year celebrations will be held on 31 Jan 2022. Students will report to school by 7.15am for morning assembly and the school programme will end at 10.30am with staggered dismissal to reduce crowding. Students will return to school on 03 Feb 2022.

10. The school will be conducting our Experiential Learning Week (ELW) in Term 1, Week 10. This programme seeks to provide your child/ward with learning opportunities beyond the classroom and has been customised to suit the needs of each level. More details will be given at a later date.

11. We seek your cooperation in ensuring your child/ward's participation in and/or preparation for the various activities the school has planned for them.

Year Head and Form Teachers

12. The school has a Year Head system to address the needs of our students better. The Year Head is a Key Personnel who looks into the development and well-being of students of a particular level. He/She works closely with the level's form and subject teachers to build relationships with and understand the needs of individual students. Where appropriate, he/she will customise the implementation of the school's student development programmes.

13. The Year Head and Form Teachers for your child/ward are in **Annex B**. Should you have queries about your child/ward's education and/or development, please feel free to contact the Year Head as well as the Form Teachers.

Commitment to Excellence – Self-Discipline

14. At Bartley, we would like to nurture our children to be self-disciplined individuals who are able to monitor and control their own behaviour. Studies have shown that students who possess a strong sense of self-discipline not only perform better academically, but also behave better, have fewer absences, and do homework more regularly than that of their less-disciplined peers.

15. The school rules, which can be found in the Student Handbook, are meant to help our students to develop self-discipline, as well as create a conducive, safe and orderly environment in school where learning can take place effectively. Please take some time to go through the school rules with your child/ward, so that he/she can work on his/her Commitment to Excellence accordingly.

Covid-19 Measures

16. To ensure that the school remains a safe environment for all students, we seek the assistance and support of parents to guide our children to observe Safe Management Measures and exercise personal responsibility.

Health and Social Responsibility

- Students who are unwell with any flu-like symptoms (e.g. fever, runny nose, cough, loss of smell) should not report to school. They should seek medical attention immediately and be kept at home until they are tested negative for COVID-19.
- Students are to comply with Isolation Orders and Stay Home Notices (SHN).
- If students or their household members receive MOH Health Risk Warning, Close Contact Tracing (CCT) or are tested positive, please inform their Form Teacher or the school and follow MOH 1-2-3 protocol.
- Students should test ART negative each day if they are on Health Risk Warning (HRW) or Close Contact Tracing (CCT) before entering the school.
- Students should wear high filtration face masks as a default except when performing strenuous exercise or eating/drinking. Students must refrain from talking when they are not wearing their face mask during these times.
- Students are strongly encouraged to bring a spare face mask (especially if they are using a disposable mask). They are also to bring along a re-sealable bag (ziplock) to store their face masks during meal times and PE.
- Students are to bring:
 - a working Oral Digital Thermometer (ODT) to school daily for our daily temperature taking exercise.
 - the TraceTogether token or TraceTogether app installed in their smartphones.
- The school will continue with our daily visual screening. Students who are unwell or show symptoms of illness will be sent home to seek medical attention.
- As a good practice, do refer to this question daily before sending your child/ward to school: Are you unwell/ on Isolation Order/ SHN/ HRW or CCT?

Social Distancing

- There will be fixed exam-style seating in the classroom, allocated seating in the canteen and spaced seating in the alternative venues. When in school, students are reminded maintain a distance of at least 1 metre from their peers.
- To ensure social distancing, students will have to practise FIXED seating during recess. This means that they must:
 - sit at the indicated numbers that corresponds to their class register number.
 - avoid sitting on areas marked with a cross (X).
- To minimise intermingling, free play activities have been suspended. The loaning of sports equipment will continue to be suspended until further notice. Students are reminded to refrain from bringing their sports equipment to school.

Staggered Dismissal

- The school will practise staggered dismissal on days where more than one level share the same dismissal time. Please note the staggered dismissal time for your child/ward.

Level	Monday	Wednesday	Friday
Secondary 1	2.25 pm	2.25 pm	1.15 pm
Secondary 2	2.35 pm	2.35 pm	1.25 pm
Secondary 3	2.25 pm	2.25 pm	1.15 pm
Secondary 4 and 5	2.35 pm	2.35 pm	1.25 pm

- Changes to the schedule, if any, will be made known to you via PG.

Physical Activity

As part of the school's care for our student's well-being, the follow safety precautions will be implemented.

Students who have gone for a COVID-19 vaccination.	Inform their PE/CCA teacher and they will be <u>excused from PE and strenuous CCA activity for 2 weeks from the date of the vaccination.</u> Please continue to be properly attired and present for the PE/CCA session.
Students who have gone for a COVID-19 vaccination for <u>more than 2 weeks</u>	They will be allowed to continue with their PE and CCA session. They will need to inform the PE/CCA teacher immediately if they develop chest pain, shortness of breath on exertion or abnormal heart beats at any point during the lesson.

School Curriculum Hours

17. School commences at 7.30 am daily, from Monday to Friday. For your reference, a copy of your child/ward's class timetable has been made available on our school website (<https://bartleysec.moe.edu.sg/information/students/curriculum-timetable>). We hope this will help you to supervise your child/ward's learning and revision at home. Curriculum hours end at 1.15 pm on Fridays. Muslim boys who are able to secure a slot at the mosque will be dismissed at 12.40pm for Friday prayers.

18. Your child/ward may also be required to attend additional lessons. We will notify you when we have such programmes lined up for your child/ward.

School Operating Hours & Turnstile Opening Hours

19. A typical school day will end by 5.20 pm (latest) from Monday to Wednesday and Friday (if there are additional classes/activities), and 6.00 pm on Thursday. Do ensure your child/ward goes home immediately after school so that he /she will have time to rest, have dinner with family, and revise/complete homework.

The operating hours for the turnstile (nearest to Bartley MRT station) are as follows:

Day	Morning	Afternoon
Mon	6.30 am – 7.30 am	2.25 pm – 6.00 pm
Tues		1.15 pm – 6.00 pm
Wed		2.25 pm – 6.00 pm
Thurs		5.30 pm – 6.30 pm
Fri		12.40 pm – 6.00 pm

Attendance and Punctuality

20. For students to do well in school, it is important that they attend school regularly and punctually so that they do not miss out on the lessons and teachers' instructions. It is also important for students to participate actively in CCA and other additional activities so that they have a full learning experience. We seek your support to ensure that your child/ward comes for school, CCA and additional activities regularly and punctually.

21. Students who are absent from school are to submit the relevant document(s) excusing their absence on the day they return to school. Students who fail to submit the document(s) supporting their absence within 5 working days of their return to school may face disciplinary action. Per semester, the school will accept up to a maximum of 4 days of absence covered by parents'/guardians' letter(s).

22. Please note that your child/ward will be considered to be late for school should he/she arrive at the class after 7.30 am. An SMS will be sent to the registered official guardian by 9.30 am on days that your child/ward is absent from school.

APPEARANCE & ATTIRE

23. Students are to groom themselves properly to uphold the image of a Bartleyan. The expected daily school attire is indicated in the table below:

Day	Attire
Monday	Girls: School blouse with school skirt Boys: School shirt with school pants
Tuesday to Friday	Girls: School Polo-Tee with school skirt Boys: School Polo-Tee with school pants

* Students are allowed to wear PE attire to school on days with PE lessons to avoid intermingling while changing in the toilets in line with Safe Management Measures (SMM).

Plain white canvas shoes and plain white socks (at least 2 fingers above ankle) must be worn

Morning Programme: Eat, Read, Connect (ERC)

24. We believe that reading is an integral part of learning. We strive to enable all our students to develop a passion for reading and learning. Our target is for each student to finish reading 10 books this year.

25. In Bartley, we have a customised ERC Programme where we seek to enable students to foster their love for reading, as well as connect with their teachers every morning. During this time, the school will also be allowing students to consume a light breakfast as they read, as it has been observed that some students do not have the time to take their breakfast at home. Students may pack a light breakfast (e.g. sandwich), or purchase some finger food from the canteen.

26. For your assistance: Do help us ensure that your child/ward arrives in school by 7.20 am daily, complete with his/her storybook and breakfast so as to fully benefit from the programme. Students may borrow storybooks from the school library if they do not have one.

Home-Based Learning (HBL) Day

27. The school will commence the Home-Based Learning Day in 2022. This initiative seeks to prepare our students to adapt to blended mode of learning which is increasingly prevalent at post-secondary education institutions. To provide parents/guardians with more information about HBL Day, please refer to **Annex C**.

28. The specific HBL dates in Term 1 for Sec 2 to 5 are: 21 Jan, 15 Feb and 02 Mar. The dates for Term 2 and 3 are listed in **Annex D** will also be published on our school website calendar at <https://bartleysec.moe.edu.sg/information/students/school-calendar>. Lesson instructions will be disseminated via the school website.

29. Another significant part of HBL Day is the component of Student-Initiated Learning (SIL). This component seeks to nurture our students as passionate learners as they are given the autonomy to select learning activities they are interested in and chart their own learning pace and directions. To help parents/guardians understand HBL Day, a handy parent guide is attached with this letter for your reference (**Annex E**).

30. To better prepare the students for Home-Based Learning Day, your child/ward will be guided by his/her Form Teacher to plan his/her learning schedule. We encourage parents/guardians to partner us in guiding and monitoring our students to grow as independent and self-regulated learners in a safe environment.

Use of Mobile Phone

31. Students are allowed to bring a mobile phone to school. However, they are expected to be responsible users. This includes taking personal care to safe keep their phones, keeping the phones away during lessons unless permission is given for use and monitoring their usage time. We will actively monitor and advise our students on the use of mobile phone.

32. We recognise the digital environment is very much a part of our students' lives. As a school, we want to create a positive learning environment and encourage all our students to be positive peer influences. To guide our students to be responsible users of technology, we will be teaching Cyberwellness through our CCE lessons. At the same time, we would like to seek assistance from parents/guardians to actively supervise and monitor your child/ward's use of online platforms to ensure they are used meaningfully and healthily.

Learning Management Systems (LMS)

33. Your child/ward will access two online portals for the purpose of teaching and learning. It would be ideal for parents/guardians to monitor and engage your child/ward in learning independently from home while maximising the usage of these portals. Here are the main LMS used in the school:

- ✓ Student Learning Space (for all subjects)
 - <https://vle.learning.moe.edu.sg/login>
- ✓ My Skills Future (for Education & Career Guidance)
 - <https://www.myskillsfuture.sg/content/student/en/secondary.html>

Student Medical Record

34. The school updates the medical records for all students annually to ensure we have the latest medical information regarding your child/ward. To enable us to best support your child/ward, kindly fill in the Online Medical Declaration Form in **Annex F**. Please submit by Friday, 07 Jan 2022.

Other Matters

Parenting with MOE

35. MOE has just launched a parenting-focused Instagram account, @parentingwith.moesg, as part of MOE's efforts to engage and partner parents. MOE hopes to connect with parents better via the account by sharing tips and MOE resources, celebrating the ups and downs of your parenting journey, and growing with you as a community by inspiring and supporting each other through shared experiences. Do follow the account, share your experiences and invite your parent friends into this community.

School Updates on Media

36. You may be interested to know that the school updates our media platforms regularly. You can find us on, Facebook at www.facebook.com/OfficialBartleySecondarySchool, Twitter <https://twitter.com/bartleysecsg>, Instagram @bartleysecondaryschool or visit our website at <http://www.bartleysec.moe.edu.sg> to learn more about our school activities.

37. We would like to inform parents/guardians that photographs or video images of students or their parents/legal guardians may be taken during school activities and events such as classroom lessons, CCA, school camps or school concerts. The school may use and publish such photographs or video recordings in school publications, the school's website, social media channels or other communication channels. If you have any concerns, please approach the school through your child's/ward's Form Teacher or Year Head.

Conclusion

38. We believe that it takes a community to nurture our young minds. A strong home-school partnership will contribute greatly to the child's success in school. Therefore, we hope to work closely together with parents to provide our children the best opportunities to learn and grow. I welcome parents to contact the school to discuss your concerns or provide your feedback. Together, we can nurture every Bartleyan as **Learners for Life and Leaders for Others**, grounded in our **C.O.R.E. values**.

39. Kindly complete the acknowledgement form for this letter (**Annex H**) and return it to us via your child/ward's Form Teacher by Friday, 07 Jan 2022. Once again, welcome to Bartley Secondary and on behalf of the school, I wish you and your family a healthy and fulfilling year ahead.

Yours sincerely,



Ms Britta Seet
Principal

**Secondary 4/5
Key Activities for Term 1, 2022**

S/No.	Date	Activity	Remarks
1.	4 Jan	Welcome Back Orientation	Dismissal: 2.35pm
2.	6 Jan	e-Poly Visit	Dismissal: 3pm
3.	6 Jan	Preparation for CCA E-open House	Selected students to prepare for CCA Open House.
4.	13 Jan	CCA 1 st training session	<ul style="list-style-type: none"> • CCA session from 3 to 6pm (latest) • Students to check-in with CCA teachers on official release time.
5.	21 Jan	Home-Based Learning Day	Students will not report to school
6.	31 Jan	Chinese New Year Celebration	<ul style="list-style-type: none"> • All students will report at the usual timing and will be dismissed at 10.30am. • Students are encouraged to come in Chinese New Year traditional costumes or decent red tops.
7.	1 - 2 Feb	Chinese New Year	Public Holiday
8.	15 Feb	Home-Based Learning Day	Students will not report to school
9.	2 Mar	Home-Based Learning Day	Students will not report to school
10.	8 – 11 Mar	Experiential Learning Week	Details will be released at a later date.
11.	12 – 20 Mar	March Term Break	

**2022 Secondary 4/5
Contacts of Form Teachers**

Bartley Secondary School
10 Jalan Bunga Rampai Singapore 538403
Tel: 6288 9013 Fax: 6280 5595
Email: bartley_ss@moe.edu.sg

S/No.	Class	Form Teachers	Ext.	Email
1.	4E1	Mr Ng Tian Lye Alex	224	ng_tian_lye_alex@schools.gov.sg
2.		Ms Leo Minyin	237	leo_minyin@schools.gov.sg
3.	4E2	Mr Yong Foo Nyen	242	yong_foo_nyen@schools.gov.sg
4.		Ms Siti Ramziyani	221	siti_ramziyani_ramdzan@schools.gov.sg
5.	4E3	Ms Yang Yan Jia	230	yang_yanjia@schools.gov.sg
6.		Mr Yeo Ng Jun Allen	238	yeo_neng_jun_allen@schools.gov.sg
7.	4E4	Mdm Pang Swee Lee	263	pang_swee_lee@schools.gov.sg
8.		Mr Ang Yong An	225	ang_yong_an@schools.gov.sg
9.	4N1	Mr Seah Yang How Finian	241	seah_yang_how_finian@schools.gov.sg
10.		Ms Sun Mengyi	230	sun_mengyi@schools.gov.sg
11.	4N2	Ms N. Prema	256	prema_narayanasamy@schools.gov.sg
12.		Ms Radiana Rza Ali	290	radiana_raza_ali@schools.gov.sg
13.	4T1	Mr Thomas Koh	270	koh_mui_pong@schools.gov.sg
14.		Ms Nadia Bte Rosli	291	nadia_rosli@schools.gov.sg
15.	4T2	Mr Edward Khoo	262	khoo_ghim_soon@schools.gov.sg
16.	5N1	Mdm Kartini Bte Yayit	221	kartini_yayit@schools.gov.sg
17.		Mr Lim Yongda Dominic	238	lim_yongda_dominic@schools.gov.sg
18.	Year Head	Ms Lee Kia Li	263	lee_kia_li@schools.gov.sg

Note: You may reach your child's/ward's subject teachers through the following means:

- Email Form Teachers (FTs) so that they can also be kept informed of your child's/ward's matters and they will assist you to link up with the subject teacher concerned.
- Go to <https://bartleysec.moe.edu.sg/our-school/our-staff> to access email addresses of teachers if you know the name of the teacher.
- Contact the staff of General Office for more enquiries.

Home-Based Learning Day

The COVID-19 pandemic has showed us that it is important for our children to be able to plan their own learning and adapt to different modes of learning. This is why MOE is implementing Home-Based Learning (HBL) as a regular feature of schooling, where our children will learn through blended learning, with a mix of home-based and in-school activities, both online and offline. There will also be a Student-Initiated Learning (SIL) component, where time and space will be provided for our children to pursue their own interests in and outside the curriculum.

At Bartley Secondary School, HBL Days are scheduled regularly to complement in-person schooling, starting in Term 1 for all students except for Secondary One students, which will commence in Term 2.

During HBL Day, learning will take place at home. They will retrieve instructions on their learning activities for that day via the school website. However, students who require a conducive learning environment and/or additional learning support will be permitted to return to school on HBL Day. More information will be provided separately to this group of students via their form teachers.

What takes place on HBL Day?

On HBL Day, your child/ward will be expected to spend 4 hours learning their assigned subjects. The subjects featured are based on the timetable for that day. Your child/ward's subject teachers will be contactable on HBL Day should your child/ward face any difficulties. They will also follow up on your child/ward's learning and provide feedback when he/she returns to school.

In addition, your child/ward will be spending 1 hour on SIL. Your child/ward may use this time to pick up a new hobby or find out more about a topic learnt in class. Your child/ward's form teachers will guide him/her to choose a suitable SIL activity, as well as to develop an SIL Activity Plan detailing what he/she plans to do. We will be seeking your assistance to acknowledge your child/ward's SIL Activity Plan for each term. Do note that activities conducted outside of home/school, and higher risk activities carried out within the home (e.g. cooking/baking) will require parent/guardian supervision.

How can I support my child/ward's learning on HBL Days?

We encourage parents/guardians to talk to their child/ward about their learning progress and well-being on HBL Days. This will enable your child/ward to maintain a positive outlook towards learning. Parents/guardians may also consider the following to set their child/ward up for success:

1. A self-directed learner takes charge of his/her own learning. Encourage your child/ward to plan out their day and follow up on their assignments.
2. A resilient and intrinsically motivated learner does not give up easily. Let your child/ward attempt assignments on their own and seek help from others if needed.
3. A curious learner often goes beyond the textbook to explore the world and derives fulfilment in the process. Allow your child/ward to have a say in what they want to explore, especially for SIL, and give them space to discover new areas of interest.

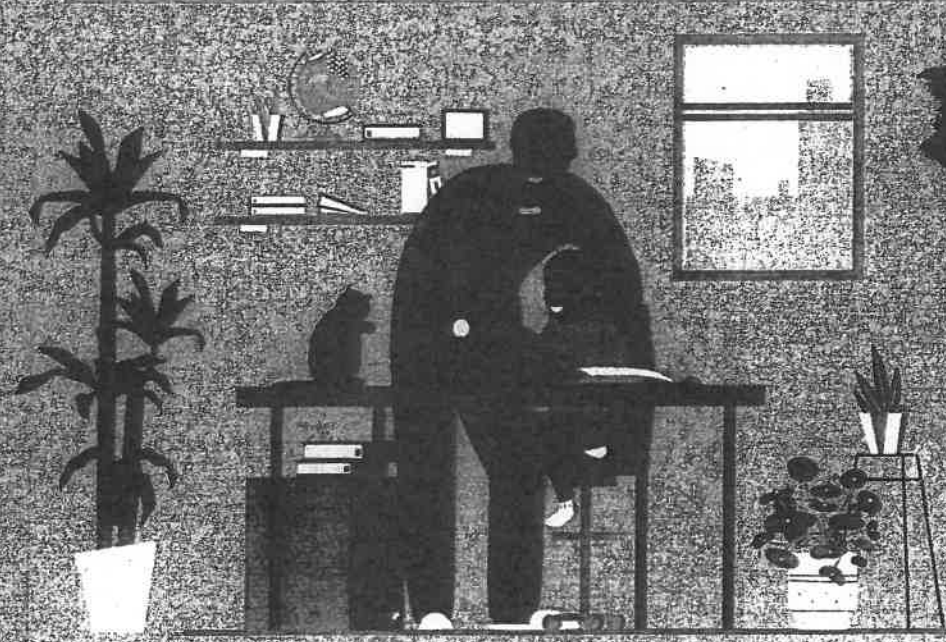
Should you have further questions on HBL Day, please contact us bartley_ss@moe.edu.sg.

2022 schedule for HBL Days

All Secondary 1-5 students will take part in HBL, according to the table below.

Term	Week	Day	Date	Sec 1	Sec 2	Sec 3	Sec 4/5
1	3	Fri	21-Jan-22	-	√	√	√
	7	Tue	15-Feb-22	-	√	√	√
	9	Wed	2-Mar-22	-	√	√	√
2	1	Fri	25-Mar-22	√	√	√	√
	3	Tue	5-Apr-22	√	√	√	√
	5	Mon	18-Apr-22	√	√	√	√
	7	Wed	4-May-22	√	√	√	√
	9	Thu	19-May- 22	√	√	√	√
3	2	Tue	5-Jul-22	√	√	√	-
	4	Fri	22-Jul-22	√	√	√	-
	6	Wed	3-Aug-22	√	√	√	-
	8	Fri	19-Aug-22	√	√	√	-
	10	Mon	29-Aug-22	√	√	√	-

Experiencing Blended Learning (BL) with Our Children!



Parent Kit

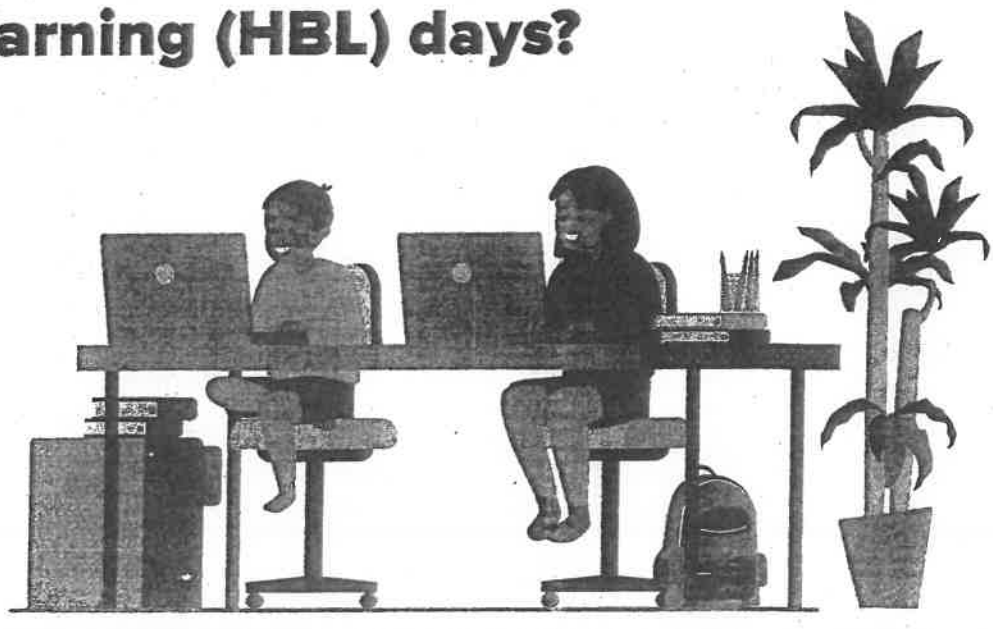
Missed our last issue?
[Click here](#) for our previous Parent Kits



Ministry of Education
SINGAPORE

© Communications & Engagement Group, Ministry of Education

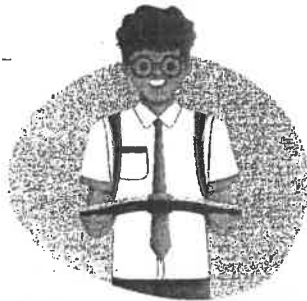
What could Blended Learning look like for your child? And how can you support them on their Home-Based Learning (HBL) days?



A Unique Blend of Learning

- In 2020, the pandemic showed us that it is important for our children to be adaptable learners as learning from home became a reality.
- One of the ways we will help our children achieve this is to introduce Blended Learning as a key part of the schooling experience for our Secondary School and JC/MI students.

What do we hope to achieve through Blended Learning? We want to...



Nurture self-directed and independent learners

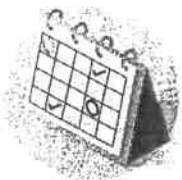


Develop passionate and intrinsically-motivated learners

03

- One key aspect of our Blended Learning approach is the integration of HBL Days as a regular feature of the schooling experience to complement teaching and learning in schools.

What will an HBL Day look like? In a nutshell, it will...



Engage students in learning the curriculum using less structured approaches than a typical school day, to provide flexibility for students to practise self-directedness in planning and managing their learning.



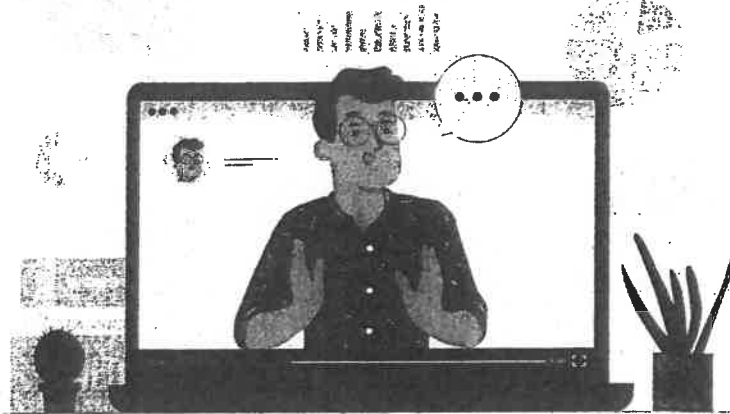
Engage students in different modes of learning.



Provide about an hour of dedicated time and space for student-initiated learning (SIL), where students can explore their interests and learn outside the curriculum.

04

Different Schools, Different Strokes



- Each school's Blended Learning plans may be different as schools have the flexibility to design learning experiences suited for their students' learning needs.
- Schools can decide on the day on which HBL is to be conducted, and the subjects and topics to be featured on each HBL Day.

05

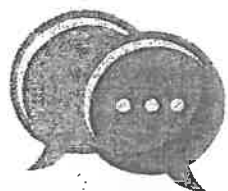
Showing your Support

You can support your child by encouraging them to be responsible for their learning and take note of what piques their curiosity!

For a start,



Understand what Blended Learning will look like for your child in his/her school when the details are shared by the school.



Talk to your child about their learning on HBL Days, e.g., simply asking them questions like "What was the most exciting thing that you learnt today?"

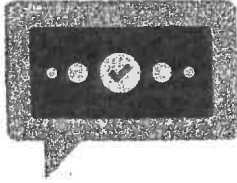
or

"Which do you enjoy and want to learn more about?" can spark deeper conversations.

0



Encourage your child to stay curious, stay focused and stay safe. They can seek out sources of information on their topics of interest and plan their HBL day schedules and check in with an adult (you or their teacher) when they want to try something new.



Suggest/share topics that might interest your child if they don't know where to start for their student-initiated learning.

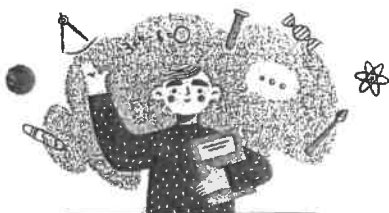


Share tips with other parents, e.g., how to provide a more conducive environment for your child or reducing distractions.

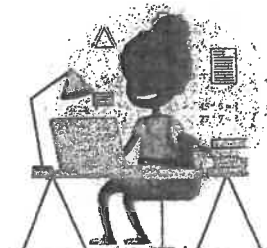
As you support your teenager on his/her Blended Learning journey, know that...



You are not required to take leave or time off from work to be physically present to coach your child or to oversee his/her progress during HBL days.



HBL days are not meant for your child to take a break from learning, but instead to take a different approach to learning.



HBL days are not meant for more enrichment or tuition classes, but for your child to exercise self-directedness and self-discipline in his/her learning.

While BL may seem to be another stay-home day for your child, it is a step towards adapting our education system to inculcate independence in him/her and igniting his/her curiosity in this digital age. It is time to reimagine what learning can look like!

Stay tuned for more Parent Kits on Blended Learning to better support you and your child.



Parent Kit

Want more Parent Kits?

Click here to tell us what you'd like to see!

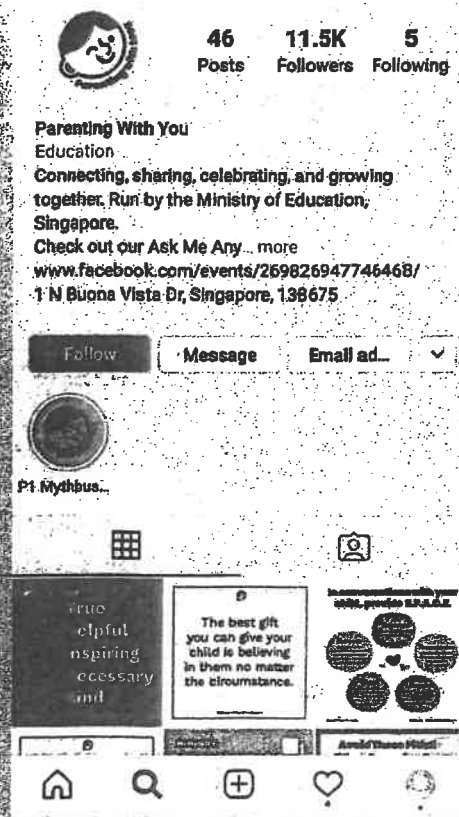
© Communications & Engagement Group, Ministry of Education

09

We want to share more than parenting tips with you.

Check out our Instagram page for parents to connect and celebrate the ups and downs of parenting, share tips and stories on the parenting experience, and grow together.

Follow us @parentingwith.moesg



BLANK PAGE






BARTLEY SECONDARY SCHOOL
Medical Declaration Form: e-Submission

NOTICE TO PARENT / GUARDIAN

For the health and safety of our students, we will require the completion of the following medical declaration.

Name of Student:	
Class:	

 	 https://go.gov.sg/bssmedical2022
--	---

I confirm that I have completed the digital submission and ensured that the information is accurate.

Name / Signature of Parent / Guardian

Date

BLANK PAGE

ACKNOWLEDGEMENT & CONSENT FORM

From:

The Parent/Guardian* of _____ (Sec _____)

2022 Secondary 4/5 Principal's Letter (Term 1)

Thank you for keeping me informed regarding the above-mentioned.

I have read and understood the contents of the letter and consent to my child/ward's participation in all the mentioned activities.

For clarification, we can be reached at the following contact numbers:

Name of Parent/Guardian:		
Relationship to Student:	Father / Guardian*	Mother / Guardian*
Home Telephone No.		
Handphone No.		
Office No.		

*delete where appropriate

My child/ward's handphone number is: _____

Remarks (if any)

 Signature of Parent/Guardian

 Date

