

JOINT INTAKE EXERCISE (JIE) 2021

17 Dec 2020 (2.30pm) – 21 Dec 2020 (5pm)


CELEBRATE EFFORTS!

The N-Level is a culmination of years of hard work and perseverance.

Let's celebrate our efforts regardless of the results.

Let's mark the end of the academic year by reflecting together on all our previous achievements in school and the challenges we have overcome!





Success is not final,
Failure is not fatal;
It is the courage to
continue that counts.

Winston Churchill

THINK OPPORTUNITIES!

- As you await your GCE N-Level results, there are 3 possibilities:
 - You are happy that your results meet your expectations,
 - You are overjoyed that your results exceed your expectations, or
 - You are worried/upset because your results fall short of your expectations.

Remember that **everyone's learning journey is different**
but **we can each have a fulfilling outcome!**

Many pathways and opportunities!

Managing Your Emotions and Making Your Decisions

When you receive your results, you may feel overwhelmed by emotions. Managing these emotions well will allow you to stay calm and make rational decisions.



STOP

Stop any unhelpful thoughts or actions that would make you more upset. Inhale deeply and exhale slowly using 10 counts as you relax your muscles. Acknowledge your emotions.

THINK

Think through the different options that are available for you. Keep things in perspective. Remember that N-Level is just one part of your life journey and not the destination.

DO

Approach a trusted adult and seek his/her help. Have a conversation with this person about what would be best for you. Make a decision based on your options and take action.

JIE 'N' – Nitec Course (2 Years)

- Read the JIE booklet and shortlist the courses you are ELIGIBLE for and INTERESTED in. Check if your options offer you a progression from Nitec to a relevant course in Higher Nitec or Polytechnic.
- **Some Nitec courses require you to attend an interview.** If you are applying for such a course and are shortlisted for interview, the **interview date will be Wed 23 Dec 2020, Thur 24 Dec 2020 (morning), and Mon 28 Dec 2020.**
- Some interviews are conducted online while the rest are conducted on-campus. **You must check on Tue 22 Dec 2020 (from 2pm) to see if you are shortlisted for an admission interview, and if so, to note your interview slot and mode.**
- Some Nitec Courses are also available as Traineeship.

Traineeship Courses (booklet)

Students interested in Traineeship courses are highly encouraged to apply for JIE 'N' as well.

<https://www.ite.edu.sg/docs/default-source/traineeship/ite-traineeship-2021-course-booklet.pdf>

<https://www.ite.edu.sg/admissions/traineeship>

JIE 'E' – Nitec Course (3 Years)

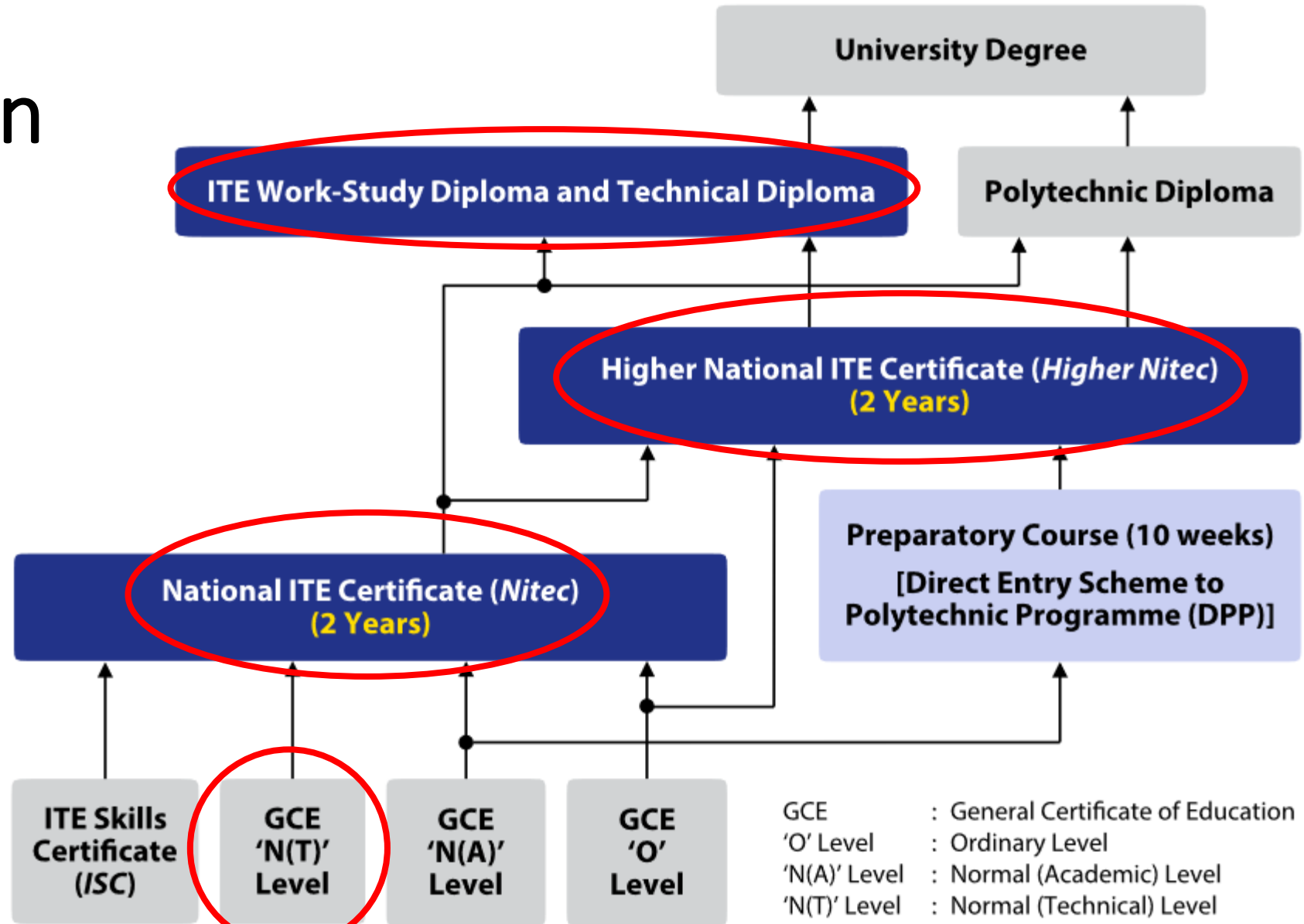
3-Year <i>Nitec</i> Courses by School	Course Code	College Code	Entry Requirements
BUSINESS & SERVICES			
Retail Services ②④ <i>(Also offered under Traineeship)</i>	NFRS3	CC-AM CW-CK	GCE 'N' Technical students with 0 or 1 'N' Level Pass
ENGINEERING			
Built Environment (Mechanical & Electrical Services) ①③⑤ <i>(Also offered under Traineeship)</i>	NFBE3	CW-CK	GCE 'N' Technical students with 0 or 1 'N' Level Pass
Mechanical Technology ④⑤	NFMT3	CC-AM	

ITE COLLEGES:

CC-AM: ITE College Central at Ang Mo Kio Drive

CW-CK: ITE College West at Choa Chu Kang Grove

Academic Progression from N(T)



* Progression is based on merit

<https://www.ite.edu.sg/admissions/full-time-courses/nitec/academic-progression>

Academic Progression from NITEC

Progression to Technical Diploma Courses

Minimum GPA from relevant Nitec course (including CCA bonus points) **3.0**

<https://www.ite.edu.sg/admissions/full-time-courses/technical-diploma/entry-requirements>

Progression to Work-Study Diploma Courses

Minimum GPA from relevant Nitec course (including CCA bonus points) **2.0**

<https://www.ite.edu.sg/courses/work-study-diploma>

Progression to Higher Nitec Courses

<https://www.ite.edu.sg/admissions/full-time-courses/nitec/progression-opportunities>

Minimum GPA from relevant Nitec course (including CCA bonus points) **3.0**

Required for:

- 2nd year of related *Higher Nitec* courses

Minimum GPA from relevant Nitec course (including CCA bonus points) **2.3**

Required for:

- 1st year of *Higher Nitec* Technical courses
- *Higher Nitec* in Paramedic & Emergency Care course

Minimum GPA from relevant Nitec course (including CCA bonus points) **2.8**

Required for:

- 2nd year of *Higher Nitec* in Automotive Engineering course
- 1st year of *Higher Nitec* Business courses
- *Higher Nitec* in Culinary Arts course
- *Higher Nitec* in Early Childhood Education course*
- *Higher Nitec* in Pastry & Baking course
- *Higher Nitec* in Precision Engineering course

* Applicants for *Higher Nitec* in Early Childhood Education must also have obtained Grade 1 or 2 for GCE 'N' (Academic) English Language, OR Grade A1 to C6 for GCE 'O' Level English Language. Please click [here](#) for details.

Progression to Polytechnic Diploma Courses

<https://jpae.polytechnic.edu.sg/app>

Nitec (in technical areas) graduates with a GPA ≥ 3.5 may also apply for admission to a related diploma course at the polytechnics. Please refer to [JPAE website](#) for more information on progression to diploma courses.

Administrative Instructions

Release of Results

- When your name is called by the teacher, do a wipe down of the desk you are seated at.
- Carry all your belongings and proceed to the teacher who called your name.
- Check that you have collected all the necessary items and sign to indicate you have received the items.
- After you are done, wipe down area in front of you.

What you will receive:

1. N Level Result slip
2. N Level Certificate
3. Personalised Form N*
4. 2021 ITE Admission Booklet with scholarship brochure inserted (JIE booklet)
5. ITE Traineeship booklet
6. What's Next brochure
7. Post-Secondary Education booklet
8. (NA only) Sec 5NA Booklist (if applicable)
9. (NA only) DPP brochure + DPP/PFP fact sheet
10. (NT only) e-NFP form + invitation letter to parents/guardian (if applicable)
11. School magazine
12. Receipts

Important pages to note in JIE booklet

Course	Who to note	Pages to note
JIE 'N' (Nitec 2-year course)	All NA and NT students	3-4, 6-17, 20-44, 50-64
JIE 'E' (Nitec 3-year course)	NT students (eligible ones only)	3, 4, 6, 18-19, 20-39, 45-49, 52-63, 65
JIE 'H'	NA students who qualify for DPP	3, 5-6, 66-105
Traineeship	All interested NA and NT students	JIE 'N' pages + 119-131

Key Dates for Jan 2021 Intake Exercise (Full-time *Nitec* Courses)

Key Activity	Period for 2-Year and 3-Year <i>Nitec</i> Courses	Remarks
1st Phase (Main Phase)		
Application	17 Dec 2020 (2.30pm) to 21 Dec 2020 (5pm)	Apply through the Internet at https://www.ite.edu.sg with NRIC / FIN and Date of Birth. You may also apply using SingPass.
Release of Results	30 Dec 2020 at 9am	Check results at https://istudent.ite.edu.sg with web ID and password
Acceptance of Course Offer Period	30 Dec 2020 to 4 Jan 2021	Accept course offer at https://istudent.ite.edu.sg with web ID and password
2nd Phase (Late Application/Appeal Phase)		
Application	30 Dec 2020 to 4 Jan 2021	Apply through the Internet at https://istudent.ite.edu.sg with NRIC / FIN and Date of Birth. You may also apply using SingPass.
Release of Results	11 Jan 2021 at 9am	Check results at https://istudent.ite.edu.sg with web ID and password
Acceptance of Course Offer Period	11 Jan 2021 to 13 Jan 2021	Accept course offer at https://istudent.ite.edu.sg with web ID and password
3rd Phase (Final Top-up Phase)		
Application	1 st Top-up Phase Application - 11 Jan to 21 Jan 2021 2 nd Top-up Phase Application - 27 Jan to 8 Feb 2021	Apply through the Internet at https://istudent.ite.edu.sg with NRIC / FIN and Date of Birth. You may also apply using SingPass.
Release of Results	1 st Top-up Phase - 14 Jan to 27 Jan 2021 2 nd Top-up Phase - 27 Jan to 15 Feb 2021	Check results at https://istudent.ite.edu.sg with web ID and password
Acceptance of Course Offer Period	1 st Top-up Phase - 14 Jan to 27 Jan 2020 2 nd Top-up Phase - 27 Jan to 15 Feb 2021	Accept course offer at https://istudent.ite.edu.sg with web ID and password

Key Dates for Jan 2021 Intake Exercise (Full-time *Nitec* Courses)

Key Activity	Period for 2-Year and 3-Year <i>Nitec</i> Courses	Remarks
1st Phase (Main Phase)		
Application	17 Dec 2020 (2.30pm) to 21 Dec 2020 (5pm)	Apply through the Internet at https://www.ite.edu.sg with NRIC / FIN and Date of Birth. You may also apply using SingPass.
Release of Results	30 Dec 2020 at 9am	Check results at https://istudent.ite.edu.sg with web ID and password
Acceptance of Course Offer Period	30 Dec 2020 to 4 Jan 2021	Accept course offer at https://istudent.ite.edu.sg with web ID and password

Important: Refer to JIE booklet [page 6](#) for details

Note (JIE 'N' and 'E'):

Release of Course Interview Details: 22 Dec 2020 (2pm) - JIE booklet page 50

Interview for Courses with Interview Requirement: 23 Dec, 24 Dec (morning) or 28 Dec 2020

For ALL:

Matters pertaining to appeals – JIE booklet page 6

JUST-IN-TIME INFORMATION ON JIE APPLICATION (JAN 2021 INTAKE)

Information For Students on Key Dates for Jan 2021 intake

1. All N(A)* /N(T) school leavers are encouraged to put in an application during the **1st Phase (Main Phase)** between **17 Dec 2020 (2.30pm) to 21 Dec 2020 (5pm)**. Application results for the 1st Phase will be released on **30 Dec 2020 at 9am**.
2. If you wish to appeal, please accept the course offered **before** applying in the 2nd Phase (Late Application/Appeal Phase) between **30 Dec 2020 to 4 Jan 2021**. The application results for the 2nd Phase will be known on **11 Jan 2021 at 9am**.
3. Unsuccessful applicants can appeal under the **3rd Phase (Final Top-up Phase)** between **11 Jan to 21 Jan 2021 and 27 Jan to 8 Feb 2021** for courses with vacancies. The application results for the 3rd Phase will be known between **14 Jan to 27 Jan 2021** and **27 Jan to 15 Feb 2021**.

*N(A) school leavers who are not eligible to progress/repeat in MOE schools.

Key Pointers for Students on ITE's Joint Intake Exercise (JIE) for Admission to Nitec Courses

All N(T) students and N(A) students (who are not progressing to 5N(A) or repeating 4N(A)) are eligible for JIE.

Keen competition for *Nitec* courses, so use all 12 choices wisely!

Participation in Main Phase is key to secure a place in ITE!

If you are keen in the work & learn option, you may consider applying for the ITE Traineeship programme. Do apply in the Main Phase to avoid missing a place in ITE!

If you are unsuccessful in EAE, make sure you apply in Main Phase to avoid missing a place!

If you have received an additional letter, then you are eligible for the 3-year *Nitec* Programme (eNFP).

If you are eligible for eNFP, make sure you apply for the 2-year *Nitec* Programme (eNFP) first before applying for eNFP!

The eNFP helps to build the necessary literacy and numeracy foundations that will enable you to successfully complete your *Nitec* course!



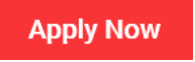
If you are counter-offered a course, accept it first before appealing to another course you may be more interested in!

STEP-BY-STEP INFORMATION FOR JIE APPLICATION

Online Application for

2-Year *Nitec* Courses

3-Year *Nitec* Course with eNFP
(for N(T) courses with 0, 1 pass)

1. Go to https://www.ite.edu.sg .	
2. Click  icon.	
3. Under JIE 'N', click  icon to link to the application website	Under JIE 'E', click  icon to link to the application website
4. At the application website: <ol style="list-style-type: none"> Enter NRIC / FIN and Date of Birth to start application. Upon completion of application, applicants will receive their web ID and password. 	
<p>Ensure that you use your PERSONAL email for application purposes. Do not use the school's email.</p>	

STEP-BY-STEP INFORMATION FOR JIE APPLICATION

Checking of Posting Results/Accept Course Offer

2-Year *Nitec* Courses

3-Year *Nitec* Course with eNFP
(for N(T) courses with 0, 1 pass)

1. Go to <https://istudent.ite.edu.sg>.
2. Enter **web ID** and password.
3. Click '**Self-Service**' followed by '**Student Admission**' followed by '**View Application Results**' to view the application results and to accept course offer.

The above steps applies to all phases (refer to [Slide 10](#) for dates).
For more details, please refer to ITE Admission Booklet.

For students to take note:

1. Students who
 - **did not apply** during the 1st Phase (Main Phase) may be contacted by your teachers to understand your reasons and, where necessary, assist you to complete the ITE application online in the Appeal and Top-Up Phases.
 - applied in the 1st Phase (Main Phase) and were **counter-offered courses** may also be contacted by your teachers to remind you to accept the counter-offer **before** submitting an appeal.
2. Students who are not enrolled in any course in secondary school or Post-Secondary Education Institutions (i.e. Poly/ITE/NAFA/LaSalle) by May 2021 may be contacted by MOE for further support and guidance.

Additional Information For Students

The information listed in the table below will help you to make an informed decision on which choice of courses you could consider applying at ITE.

S/N	Information	Attachment/Link
1	ITE Factsheet 2020	
2	ITE Course Booklet 2021	https://www.ite.edu.sg/docs/default-source/full-time-courses-doc/ite-course-booklet-2021.pdf
3	ITE Traineeship Course Booklet 2021	https://www.ite.edu.sg/docs/default-source/traineeship/ite-traineeship-2021-course-booklet.pdf
4	Information on Progression Opportunities (From <i>Nitec</i> Courses to <i>Higher Nitec</i> and Technical Diploma Courses)	https://www.ite.edu.sg/admissions/full-time-courses/nitec/progression-opportunities
5	Information on Graduate Deployment Survey	https://www.ite.edu.sg/admissions/graduate-employment-survey

Support from BSS



Education and Career Guidance (ECG) Support for 'N' Level Students

Our ECG Counsellor, Ms Valerie, will be in Bartley on:

Date: 18 Dec 2020 (Friday) and 21 Dec 2020 (Monday)

Time : 8am to 12pm

Venue: ECG Room, Level 3

Students and parents who wish to have a consultation session with Ms Valerie may make an appointment at:

<https://go.gov.sg/bartley-ecg>

Or scan the QR Code

Please bring along 'N' Level Results Slip, Form N and JIE Booklet for the consultation.



School's Support

The school will open Computer Lab 3 with internet access & printer.

- Dates: 18 Dec and 21 Dec 2020
- Time: 9am – 3pm
- Staff: Ms Nilar (for assistance)

YH 4/5, Ms Charissa Ong, is contactable via Whatsapp @ 91279253

External Support

Students may also contact the ECG Centre @ MOE (Grange Road) for online or phone counselling appointments between 10 to 23 December 2020 via

- ✓ email: moe_ecg@moe.gov.sg,
- ✓ the appointment booking form: <https://go.gov.sg/moe-ecg-centre> or
- ✓ phone: 68311420 (operating hours are 9.00 am to 5.00 pm on weekdays and 9.00 am to 12.30 pm on Saturdays).

Please have your 'N' Level Results Slip, Form N and JIE Booklet ready.

Useful Resources for Students

Speak to an ECG Counsellor

- Making informed decisions is important for successful transition from school to further education.
- Speak with your teachers and ECG Counsellor in school, besides your parents, on the possible pathways.
- MOE ECG Centre offers online or phone counselling services to GCE N-Level students from 10 – 23 December 2020 (Weekdays: 9.00 am to 5.00 pm; Saturdays: 9.00 am to 12.30 pm).
- Details on how to make an appointment can be found in the What's Next pamphlet distributed to you.

Make an online or phone counselling appointment with the ECG Centre @ MOE (Grange Road) through

<https://go.gov.sg/moe-ecg-centre>.

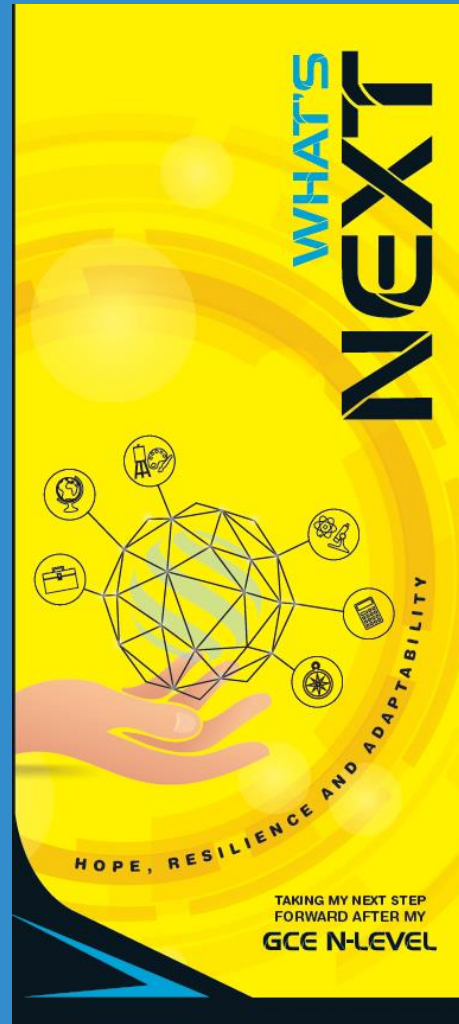


MySkillsFuture Student Portal (Secondary)

Visit <https://go.gov.sg/MySFSec> for more information on post-GCE N-Level options



What's Next – A Quick Guide



<https://go.gov.sg/whats-next>

Reach out for support

- If you have any concerns or are not coping, do reach out to someone you trust and speak with them. It could be a parent, teacher, school counsellor or a friend that you can talk to.
- If you experience prolonged difficulties, the Community Health Assessment Team (CHAT) provides personalised and confidential mental health checks and face-to-face consultation for youth aged 16 to 30.
- To speak with a youth support worker, you can visit CHAT Hub at *Scape, #05-05. You can also call 6493 6500/ 6501 or email CHAT@mentalhealth.sg.
- Alternatively, you may also call the Samaritans of Singapore's 24 hour hotline at 1800-221-4444 to speak with someone.



How am I doing? Sec/JCCI

I'm doing great!
I'm doing pretty good.
I'm doing okay, i guess.
I'm starting to struggle.
I'm having a really bad time.
I need to reach out for support.

Having difficult emotions during a stressful and uncertain period is normal. Keep a look out for some of these signs:

D Deliberately avoiding others
I Increased irritability, restlessness, agitation, stress and anxiety
S Sending or posting moody messages on social media
T Talking about death or dying
R Reacting differently or gradually losing interest in things they used to like
E Eating more than usual or having a much reduced appetite
S Sleep pattern changes with difficulty falling asleep or oversleeping
S Slowing down of energy levels

If you notice any of these signs in yourself or your friends, **have a chat with your school counsellor or teacher**
Or contact SOS 24-hour hotline at **1800-221-4444**

 © 2020 EduKeele Brash, Student Development Curriculum Division (SDCD), Ministry of Education, Singapore. No part of this final product may be reproduced or transmitted in any form or by any means, electronic or mechanical, including photocopy, recording or any other information storage and retrieval system, without written permission from SDCC, MDE.

<https://go.gov.sg/wellbeingsecjcci>

Thank you





Ministry of Education
SINGAPORE